

DISABILITY INCLUSION SIX MONTH SNAPSHOT

JANUARY - JUNE 2019

IO-1

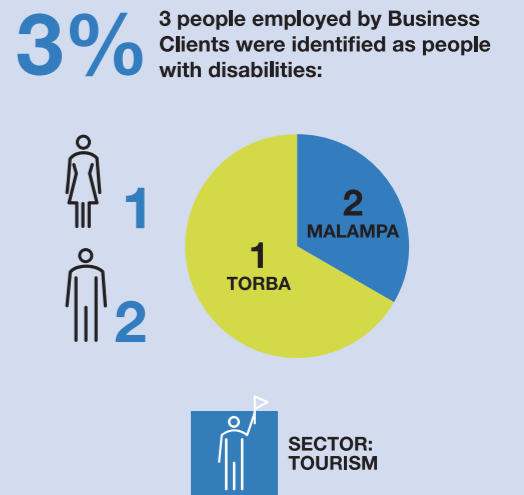
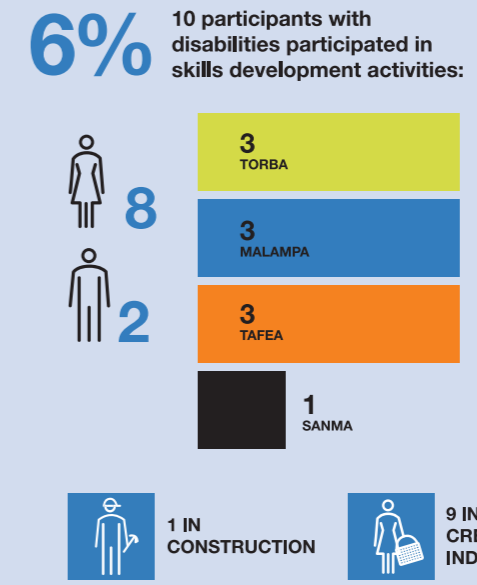
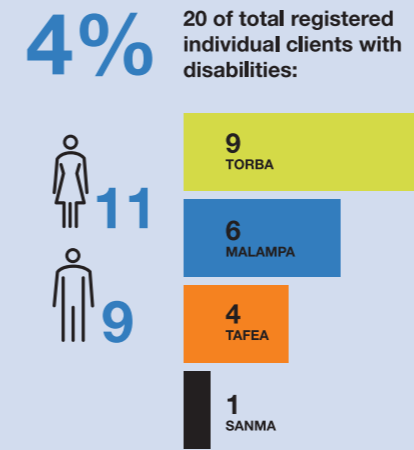
- Training Provider Inclusion Improvement Agreements signed with 7 Training Provider partners
- Partnership agreements signed with Ministry of Justice and Community Services, Vanuatu Disability Promotion and Advocacy Association and Vanuatu Society for People with Disabilities

Brokering cross-sector collaboration:

Sanma Skills Centre worked with Lonnoc Rural Training Centre, Pektel Rural Training Centre and Vanuatu Disability Promotion and Advocacy Association to implement inclusive construction training for 20 clients.

Participants are building an accessible training venue at Lonnoc Rural Training Centre as a result.

1 woman, 18 men, 1 man with disability



IO-3

Delivery of 8 disability inclusive skills development programs

- Malampa-based RTC implementing a disability inclusive construction training in Torba Province
- Malampa-based RTC implementing disability inclusive construction training on Santo for people displaced from Ambae
- Construction coaching for Tafea bungalow owners in accessible bungalow design

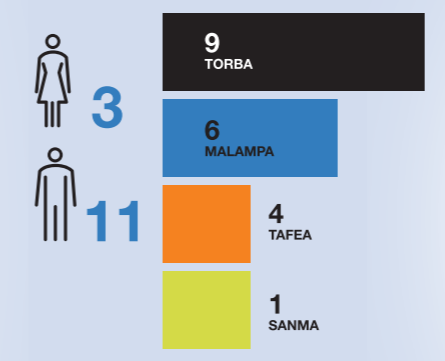


IO-4

14 skills development personnel representing 7 Training Providers received training and coaching on disability inclusion and financial management. Trainer is a woman with disability, and coaching provided by two men and one woman.

IO-6

Disability inclusion standards at Training Providers have improved, including trainee identification, attendance and participation, accessibility of premises, community awareness raising & trainer capacity.



IO-7

Coaching provided by one woman and two men

